

---

## **City of Omaha – Pipal Park Master Plan Stakeholder Meeting**

October 7th, 2021

---



# Agenda

---

- Fountain Assessment
- Restroom Assessment
- Survey Results
- Site Master Plan
- Master Plan enlargements
- Preliminary Cost Estimate
- Next Steps

# Fountain Assessment

- Differential settlement affecting structures, causing cracking
- Repair materials are failing
- Water seeping from cracks and accumulating below the structure
- Sand is accumulating in troughs.
- Sand is accumulating in troughs, algae and/or mold growing in fountain



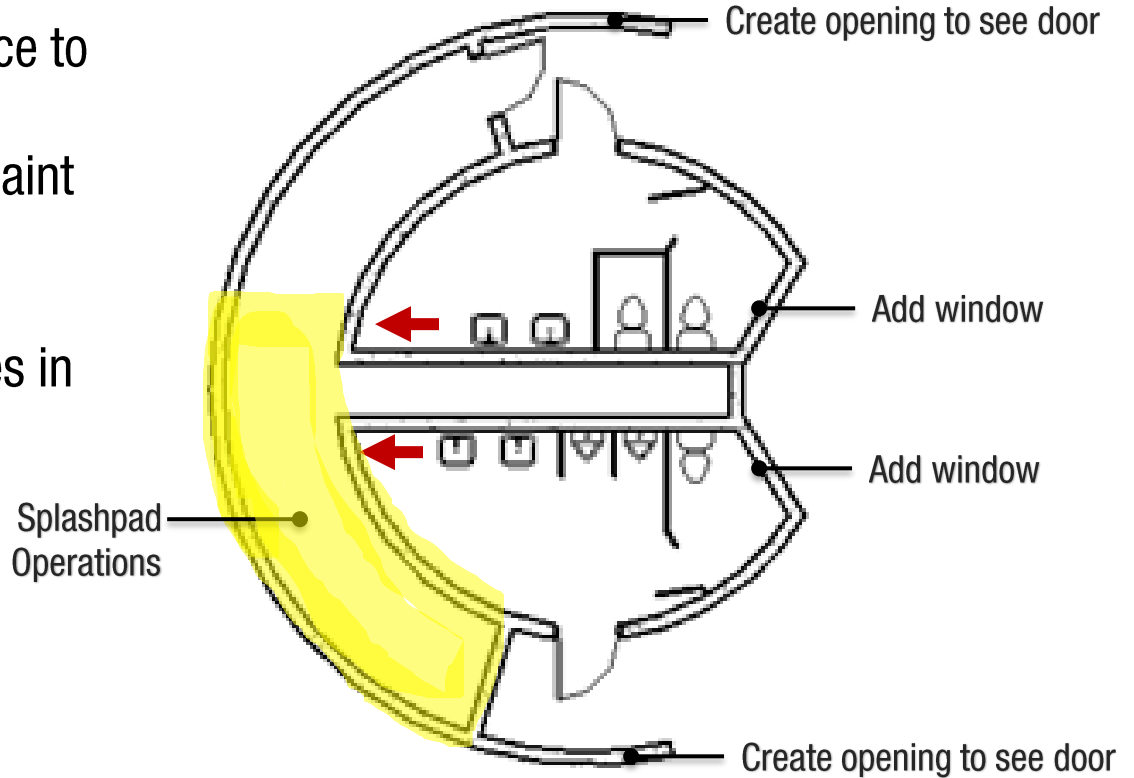
# Restroom Assessment

---



# Restroom Renovation

- Move fixtures over to add space to accessible stall
- New fixtures, partitions, and paint
- New roof
- Add windows and ventilation
- Splashpad controls and utilities in unoccupied interior space.



## Survey results

---

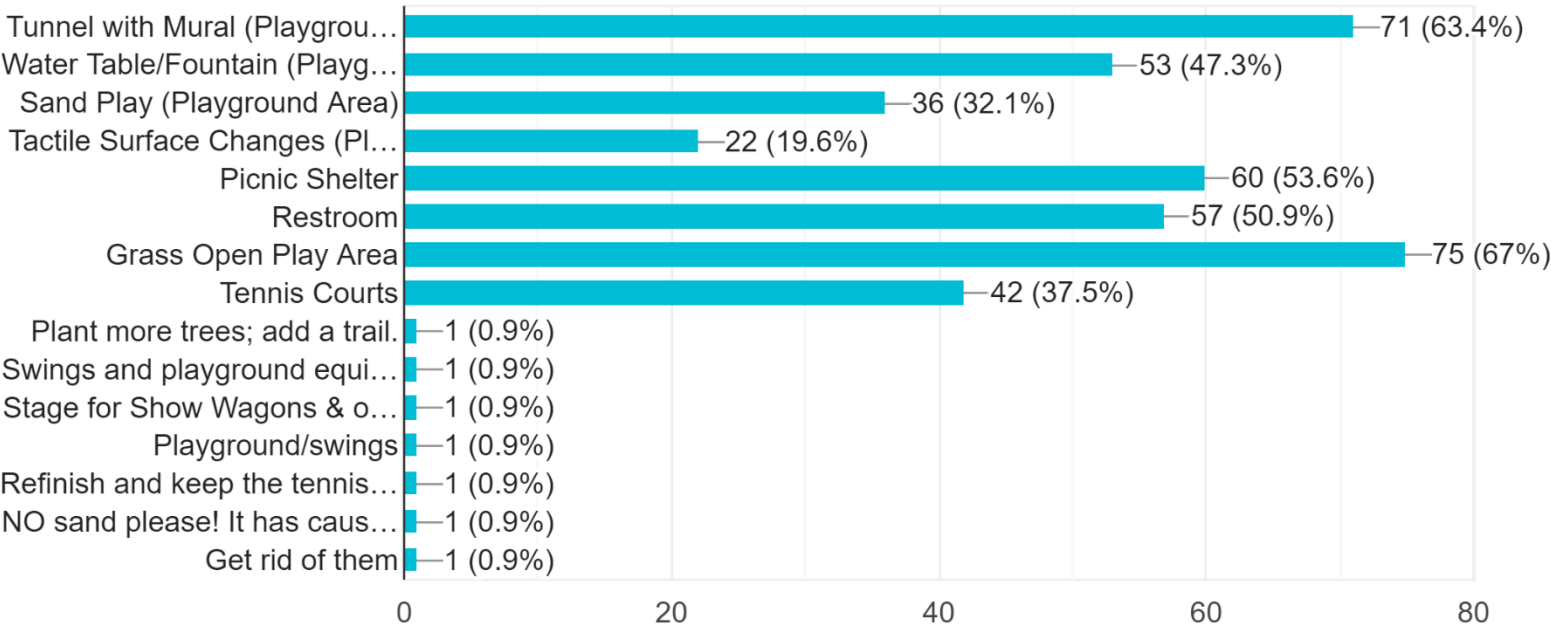
- 121 responses
- Other improvements that people would like to see?
  - Walking Trail
  - Updated restrooms
  - Dog Park
  - Inclusive Play
  - Frisbee Golf
  - Shaded areas at splash pad
  - Renovate tennis court
  - Lighting for sculpture



# Survey results

Which existing elements of the park would you like to preserve? Please select any and all images you like

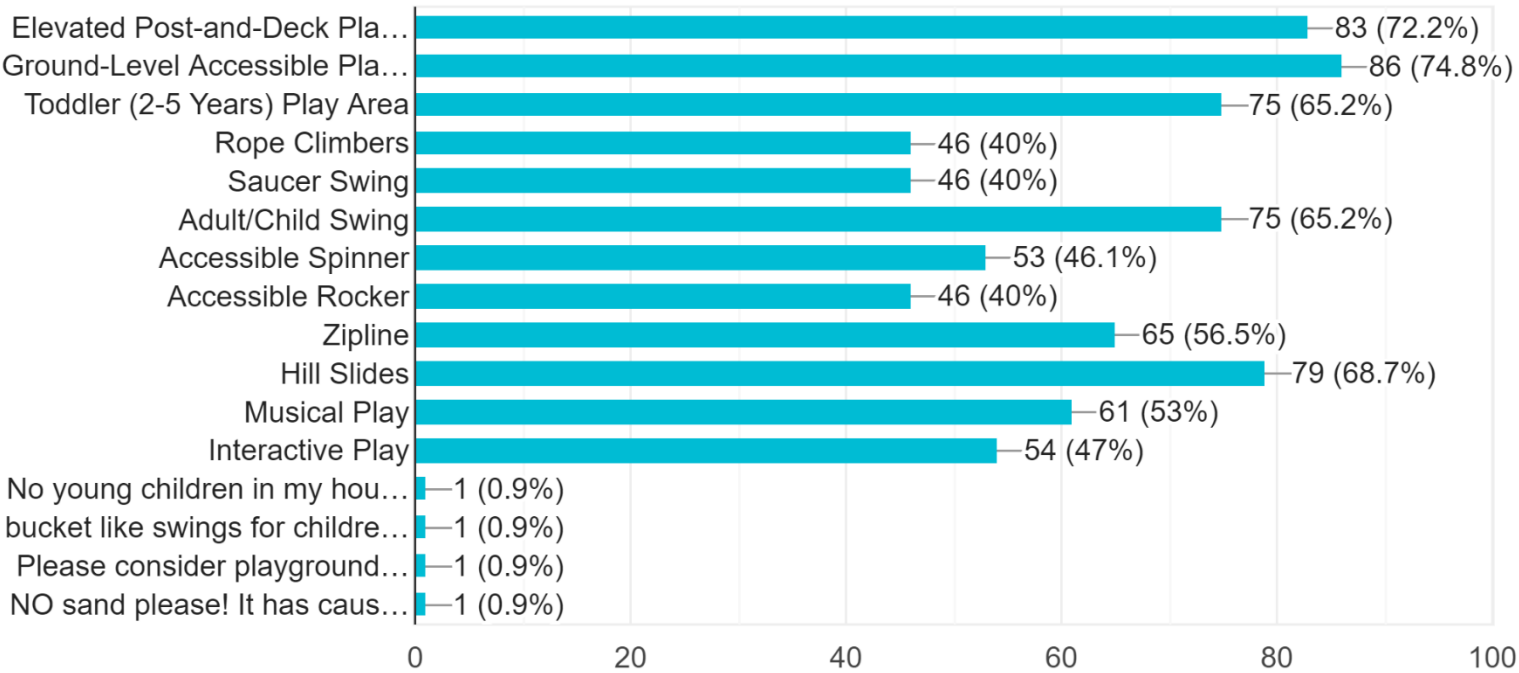
112 responses



# Survey results

What elements would you like to see in the Playground? Please select any and all images you like

115 responses

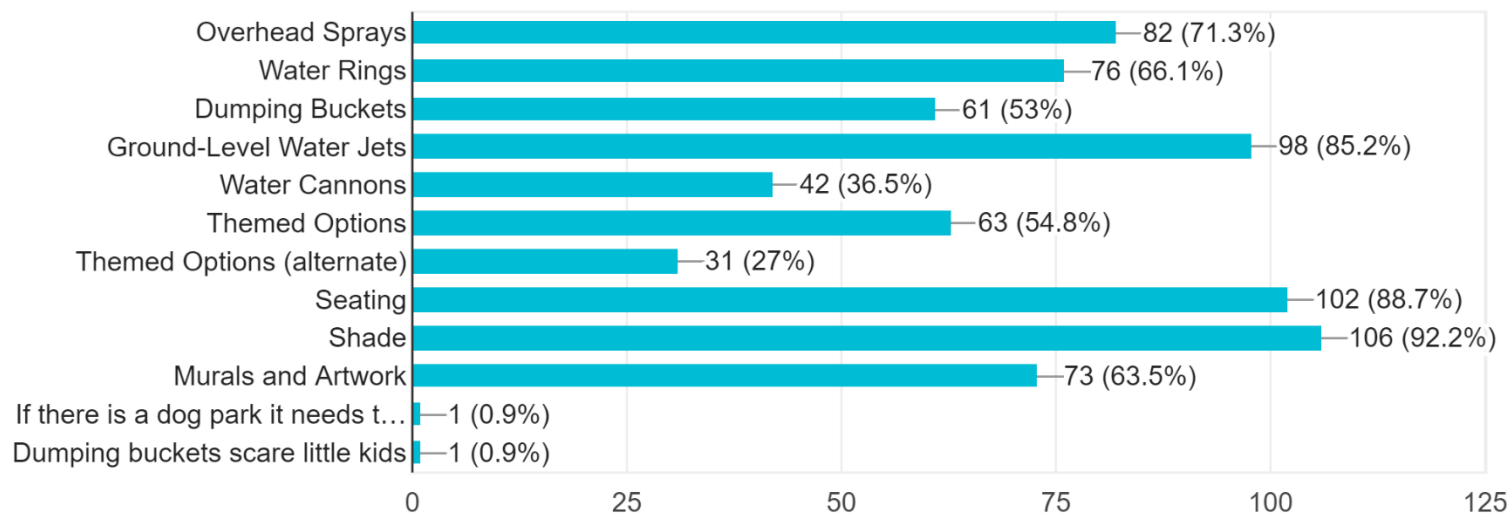




# Survey results

As part of the Master Plan, we are considering adding a splash pad to the park. What elements would you like to see in the Splash Pad? Please select any and all images you like

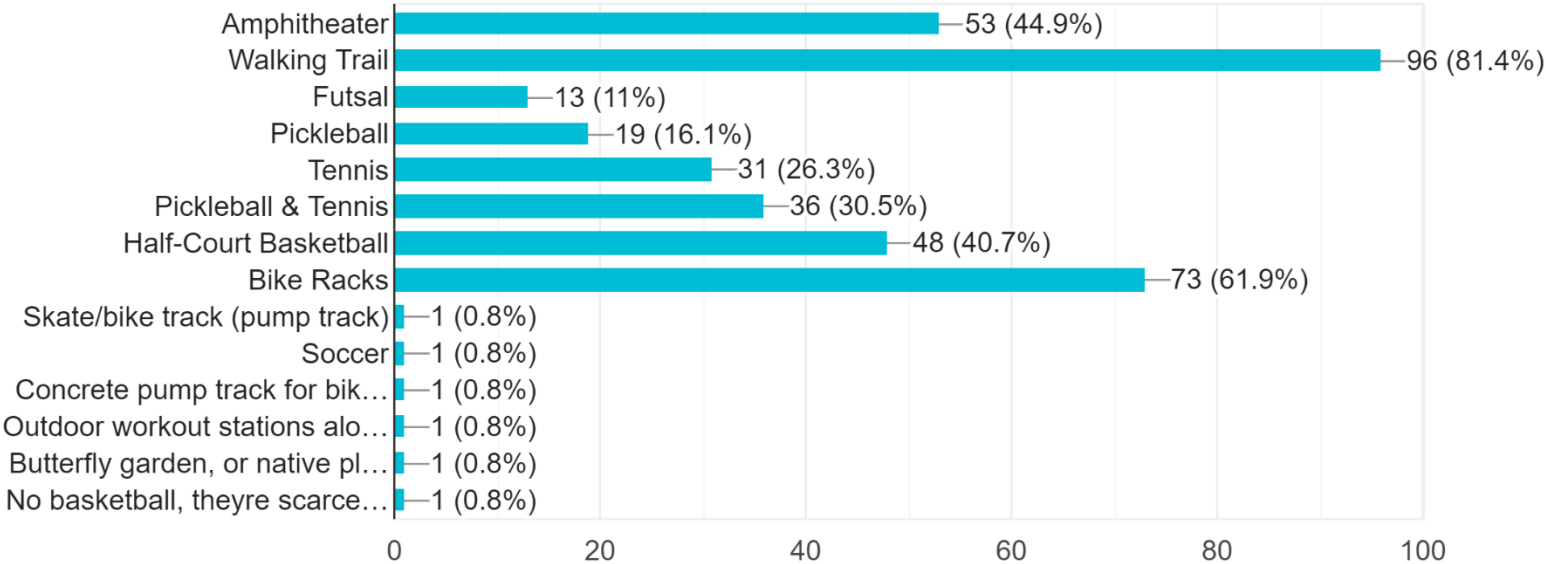
115 responses



# Survey results

What other types of activities would you like to see in Pipal Park? Please select any and all images you like

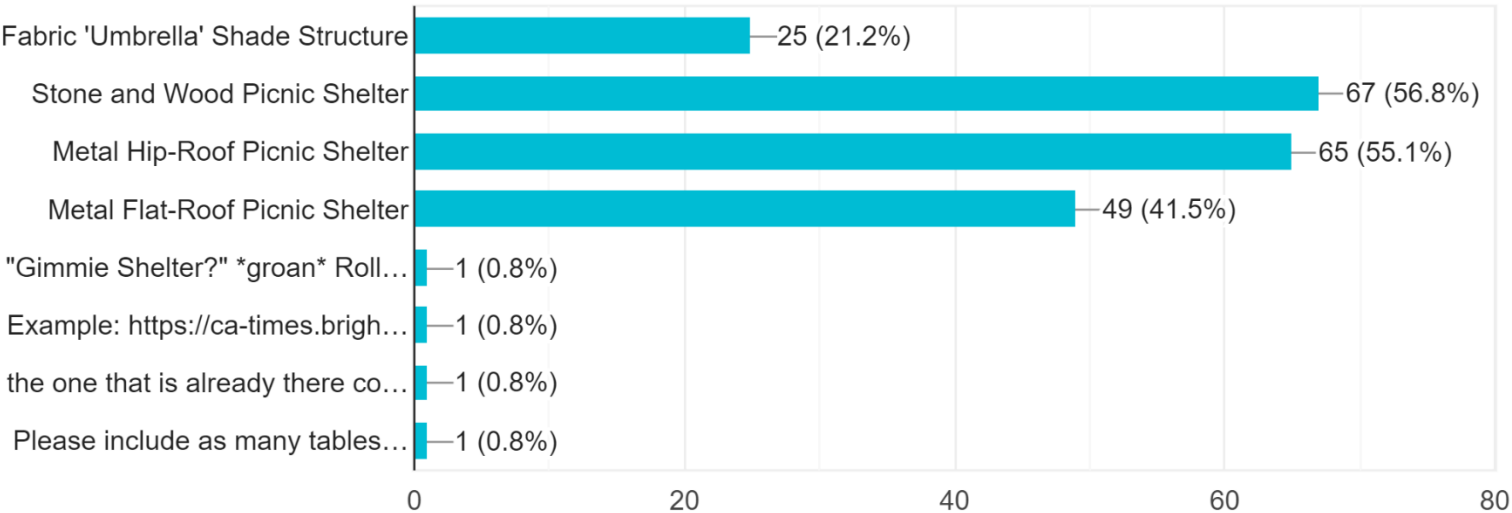
118 responses



# Survey results

As part of the Master Plan, we will consider updating the picnic area with a new shelter, picnic tables, and charcoal grills. What type of Shelter wo...e to see? Please select any and all images you like

118 responses



# Proposed Layout



- Park Entry – Sidewalk Connection
- Sculpture – Extend Sidewalk for Accessible Walkway
- Existing Shelter
- Inclusive Playground
- Disc Golf 9-Hole Course – First Tee
- Updated Picnic Area
- Renovated Restroom
- Proposed Splash Pad
- Dog Park
- Proposed Pickleball Courts
- Concrete Walking Loops
- Open Green Space
- Amphitheater / Outdoor Classroom
- Stairway Connection to Walking Trail Loop
- Future Neighborhood Connection



# Proposed Layout – Disc Golf Course



- 9-Hole Course (Par 29)
  - Par 3 – Holes 1, 2, 3, 4, 5, 7 & 9
  - Par 4 – Holes 6 & 8

# Inclusive Playground





# Playground Equipment | 5-12 Play Area



Landscape Structures – PlayBooster (Goodrich Park)



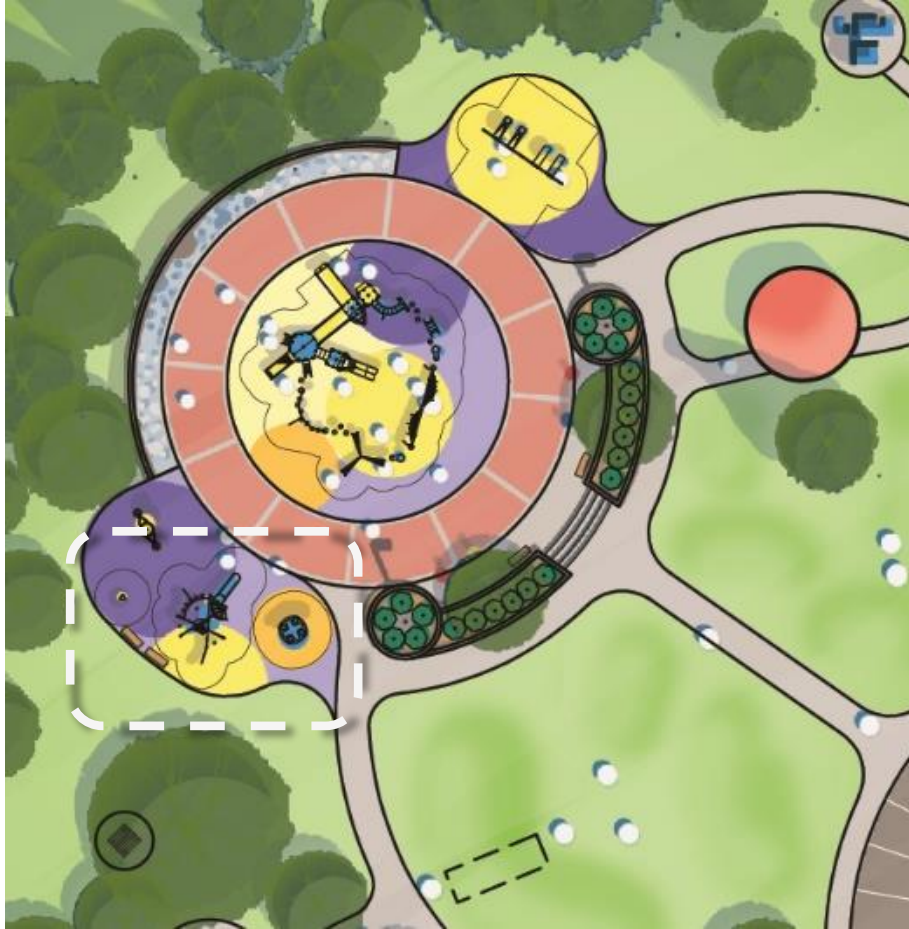


# Playground Equipment | 5-12 Play Area





# Playground Equipment | 2-5 Play Area



Landscape Structures – Weevos (Abbott's Creek Comm. Center)



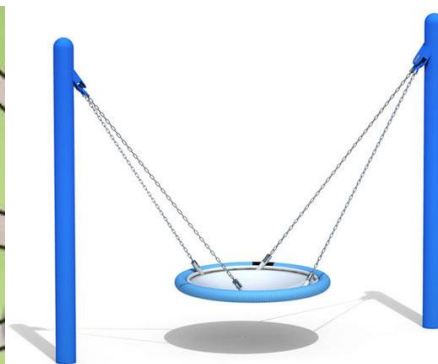
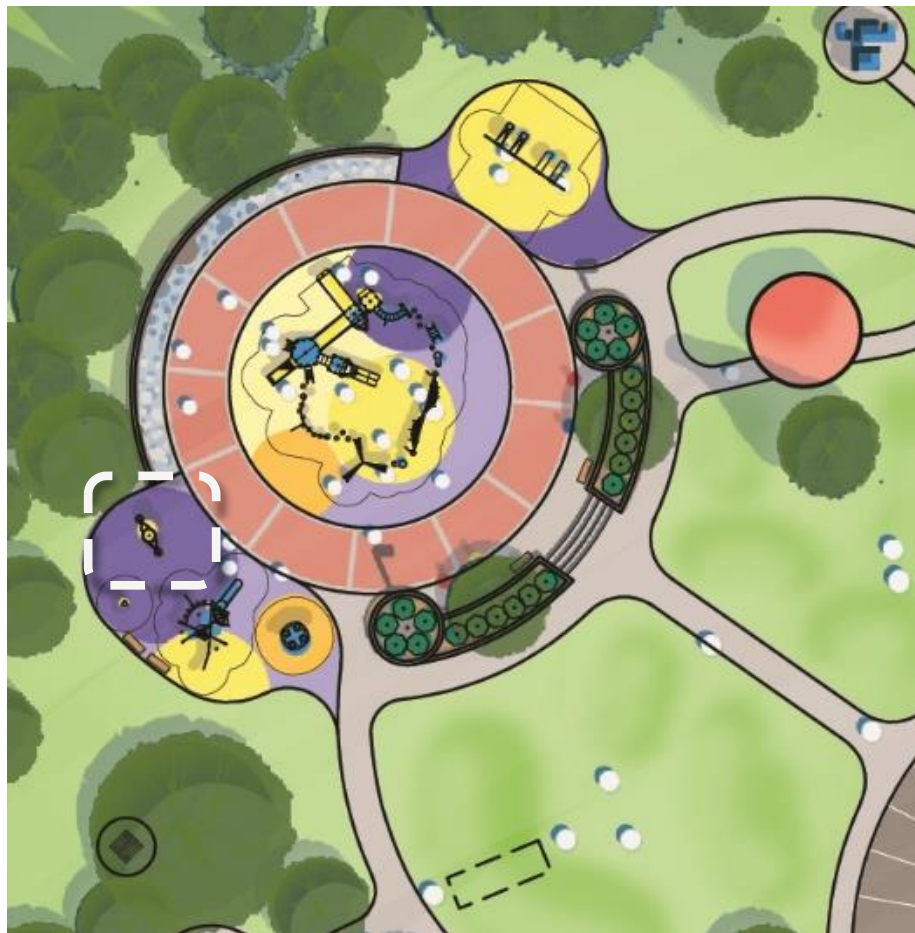
Saddle Spinner



Accessible Spinner



# Playground Equipment | 2-5 Play Area



Dynamo Spia Swing



# BCI Burke Alternative Structures



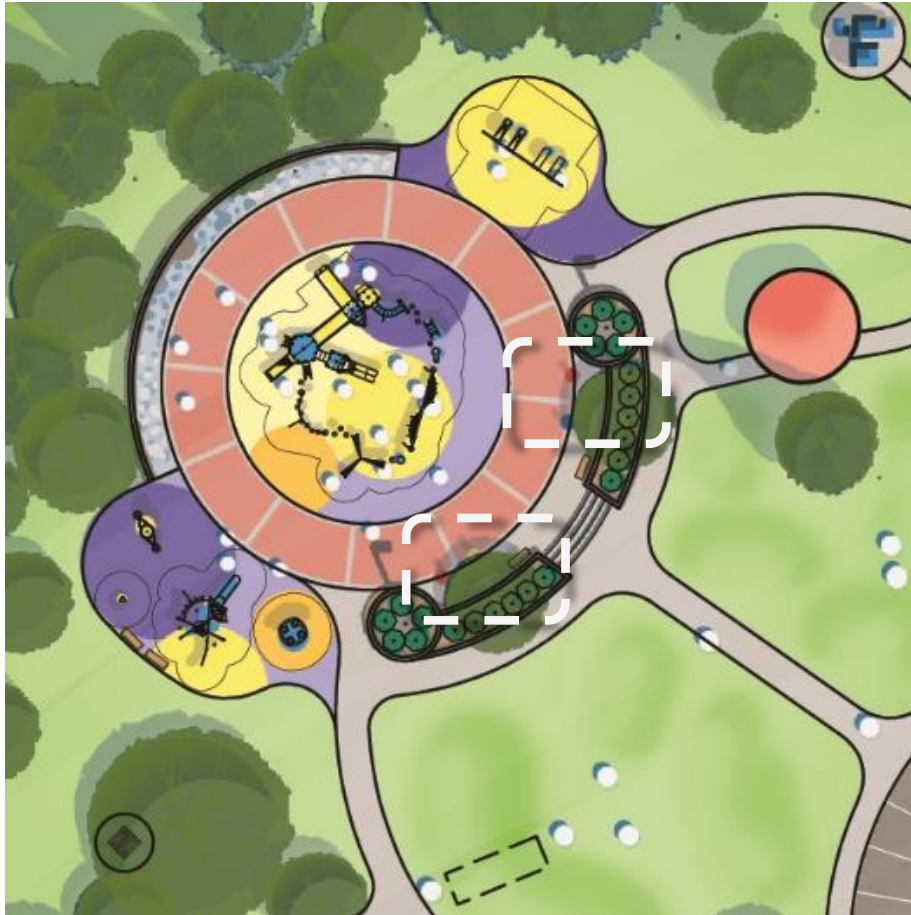


# Playground Equipment | Swing Set





# Playground Equipment | Sensory Area



Accessible Calypso Chimes



Harmony Flowers



Babel Drum



Bells









# Splash Pad



Medium-Height Jets

Seat Wall

Water Runnel

Mid-height Fountain

Tall Spray Structures

Spread Out Streams

Misters

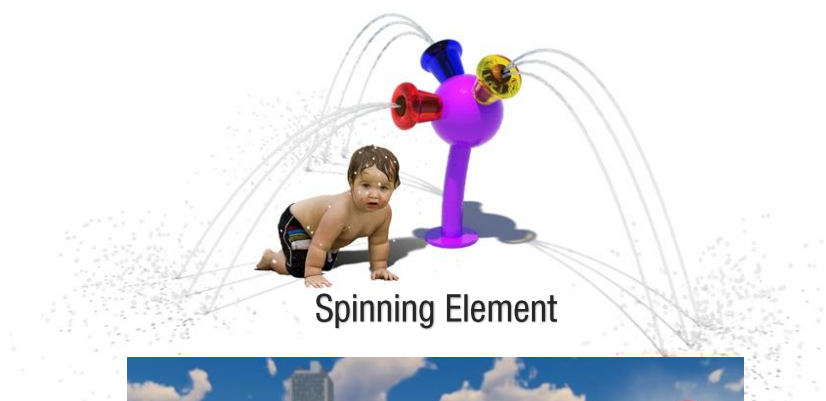
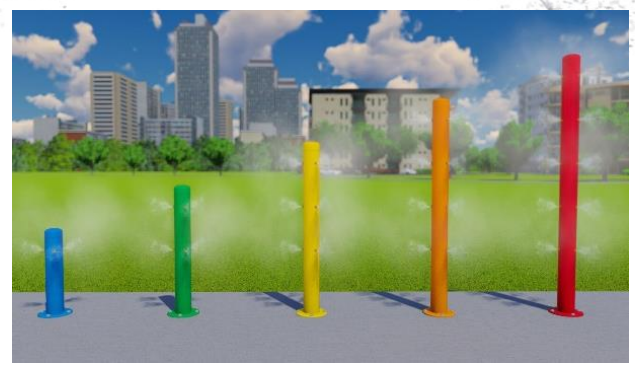
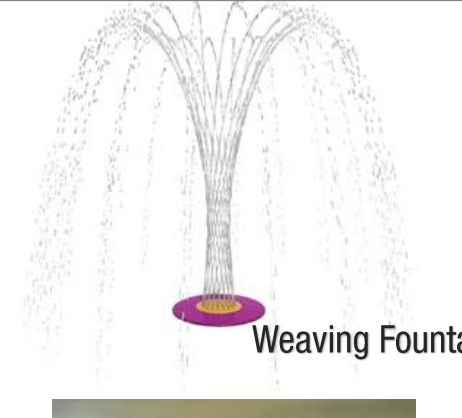

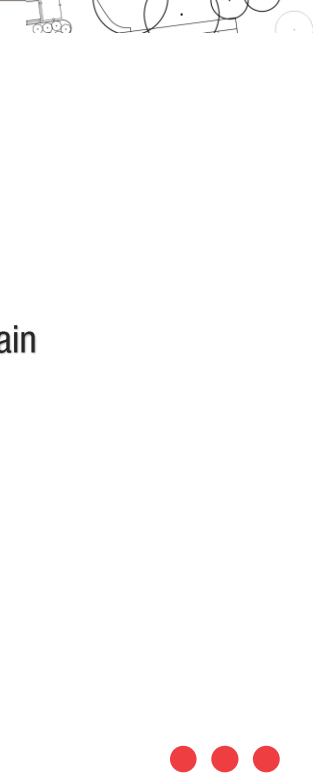
Spinning Elements

Water Coil

Weaving Fountain & Bubblers

Seating Area with Shade Structures

# Splash Pad Elements

INTENSITY LEVEL	LOW	MEDIUM	HIGH
ELEMENTS	<div data-bbox="251 305 1081 709"><p>Spinning Element</p></div> <div data-bbox="367 655 1004 1026"><p>Mister</p></div>	<div data-bbox="1120 287 1584 709"><p>Weaving Fountain</p></div> <div data-bbox="1159 687 1545 993"><p>Bubbler</p></div>	



# Splash Pad Elements

INTENSITY  
LEVEL

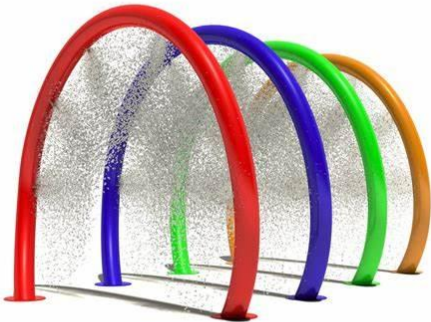
LOW

MEDIUM

HIGH



ELEMENTS



Water Coil






Spread-out Streams



Mid-height Fountain

# Splash Pad Elements

INTENSITY LEVEL	LOW	MEDIUM	HIGH
ELEMENTS	 <p data-bbox="606 904 784 942">Tall Fountain</p>	 <p data-bbox="1161 904 1298 942">Tall Spray</p>	

# Dog Park



Synthetic Turf Agility Areas, typical

Seating Area

Small Dog Area Entrance

Large Dog Area Entrance

6'-0" Height Perimeter Woven Wire Fencing

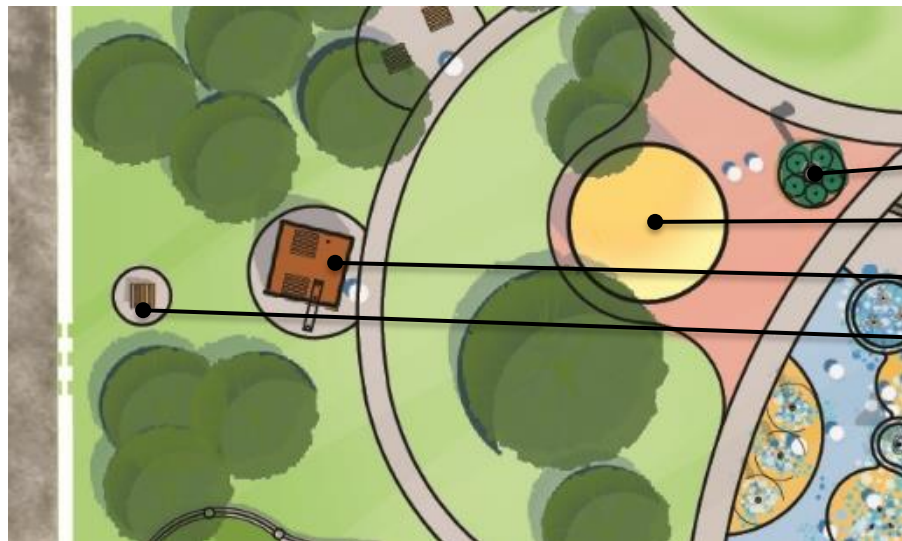
Mulched Play Area

Existing Trees





# Shelter



Existing plaque

Renovated restroom

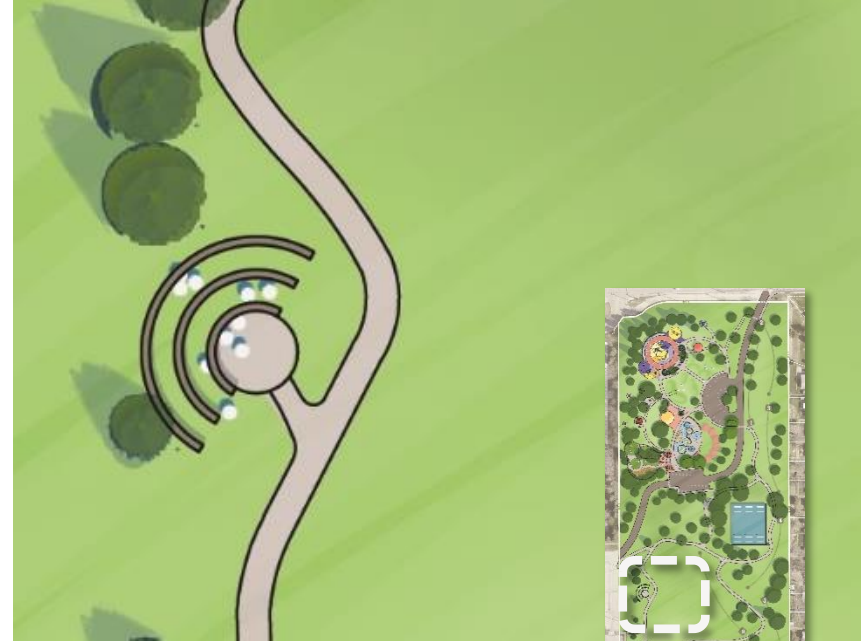
Shelter with grill and picnic tables

New picnic table



# Amphitheater / Outdoor Classroom

---







## Preliminary Cost Opinion

---

- Major Elements
  - Splash Pad and Ex. Water Feature Renovation - \$610,000
  - New Shelter and Restroom Renovation - \$270,000
  - Playground - \$340,000
- **Total Construction Cost - \$3,000,000-\$3,400,000**



# Schedule

---

- Next Steps
  - Update Plan per stakeholder comments
  - Work with City to determine a phase one construction project
  - Start design for phase one in January of 2022





Create. Meaning. Together.

